

480-726-0595 / 3545 East Menlo Circle / Mesa, AZ 85213

**Functional Formation Architecture, pllc**

June 21, 2016

## PROJECT NARRATIVE

Bella Via Village Shops  
4425 South Mountain Road, Mesa, Az  
PS16-023, PLN2016-00191

The project site, located at the Southeast corner of Mountain Road and Warner Road, is currently vacant and consists of 5.27 acres. The property is zoned C-2, and is surrounded by existing single family residential neighborhoods, with the exception of a private school (American Leadership Academy) located south of the project site.

This application proposes a new property division, leaving the eastern portion, approximately 51,009 S.F. (1.17 acres), as vacant land for future commercial development. At the western portion, approximately 120,132 S.F. (2.76 acres), a new neighborhood services center is proposed.

A new site entrance driveway is proposed from Mountain Road at the south end of the parcel. A second entrance driveway is proposed from Warner Road centered on the proposed new property division. This driveway will be shared by both properties.

The new building is located approximately 141 feet from the Mountain Road Right-of-Way and approximately 79 feet from the Warner Road Right-of-Way. Parking is located along both frontages and at the rear (east side) of the new building. Fire truck access is provided around all four sides of the building and refuse containers are proposed at the rear.

The proposed new building will consist of 18,037 S.F. and is designed to accommodate up to 14 tenant spaces. The future tenants are not known but will comprise businesses that are allowed by the C-2 zoning district. Types of tenants we anticipate to lease would include a small grocer or health food market, beauty salon, medical or dental office, insurance office, restaurant, pool supply, etc.

The building architecture is primarily contemporary in style and incorporates lightly colored E.F.I.S., standing seam metal roofing, stone veneer, steel beam/trellis, and painted masonry. The front building facade incorporates a rhythmic pattern of contemporary steel trellis elements separated by a portico facing Mountain Road and visually anchored metal roof canopies at each corner. The portico and corner anchors incorporate tenant sign placement below the metal roof, while the steel trellis areas

provide sign placement on the building wall within recessed areas subtly highlighted by a steel plate at the top.

The amount of vehicular parking required is 66 spaces minimum based on 1 space per 275 S.F. of building area. The maximum number of vehicular parking spaces allowed is 83, and this is the number of spaces being provided. Four of the 83 parking spaces will be accessible parking spaces.

Storm water retention is proposed within the perimeter landscape areas with bleed off to the storm drain located in Mountain Road. A new water line is proposed to connect with the existing water line in Mountain Road, and to extend east, then north, around the new building with another connection to the existing water line in Warner Road. The new building sewer is proposed to connect with the city sewer main located in Mountain Road.

The site has 31% of its area designated to receive landscape material. The landscape plan proposes Date Palm trees mixed with Chitalpa trees behind the street corner monument wall. Fruitless Olive and Live Oak trees are placed along the street frontages. A mix of Dalbergia Sissoo and Live Oak trees are used at the perimeter landscape areas adjacent to the south and east boundaries. At the parking area, a mix of Fan West Ash and fruitless Olive are utilized, and the building foundation planting incorporates Texas Mountain Laurel trees.

If you have any comments or questions, please feel free to contact me at:

480-726-0595

Lpartch@FunForm.net

A handwritten signature in black ink, appearing to read "Lesley L. Partch". The signature is stylized with a large, looped "L" and a cursive "Partch".

Lesley L. Partch

Functional Formation Architecture, pllc (Architect)



Maricopa County Assessor  
Paul D. Petersen

Search

Basemap

Imagery

1 parcels selected

E Rutledge Ave

APN: 304-33-601  
Address: 11249 E RUTLEDGE AVE, AZ

E WARNER RD

E WARNER RD

E WARNER RD

S Mountain Rd

S Mountain Rd

S Mountain Rd

S Antonio Cir

S Antonio Cir

Upperd Ave

by Ave

E Sh

E St

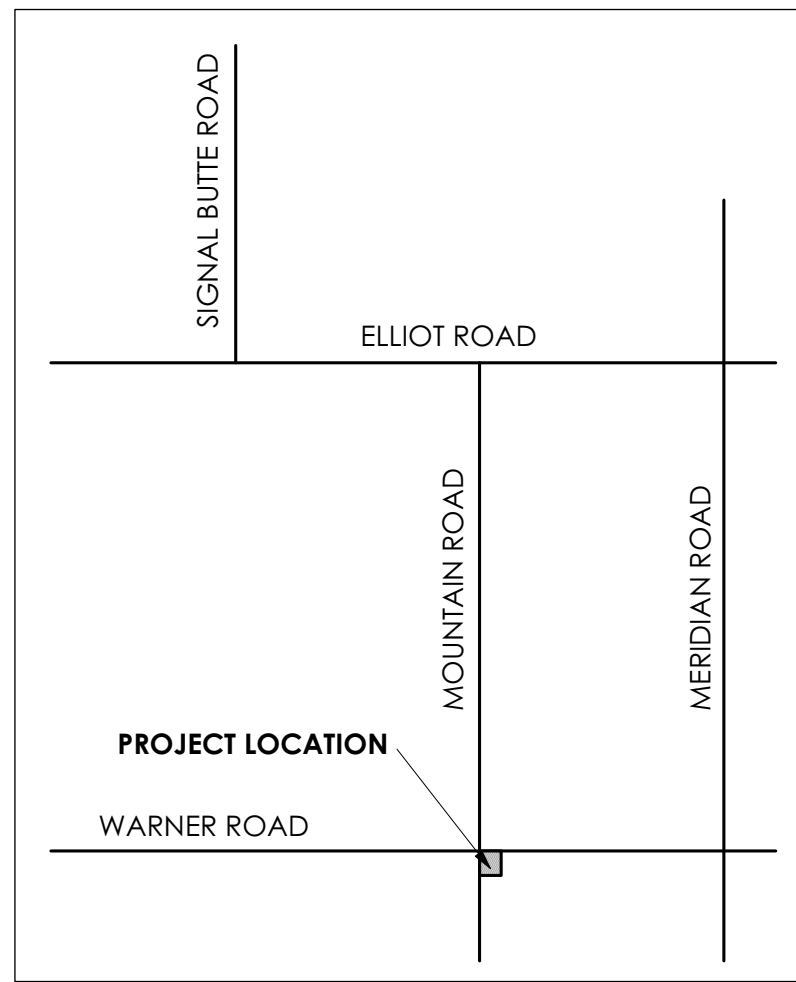
N  
W  
E  
S

70m  
200ft

POWERED BY  
esri

Geographic Map Coords: Lat = 33.3362, Lon = -111.5925





### PROJECT DATA

ADDRESS:	4425 SOUTH MOUNTAIN ROAD MESA, ARIZONA 85212
ACCESSORIES'S PARCEL NUMBER:	304-33-990A
ZONING:	C-2 (EXISTING & PROPOSED)
GROSS SITE AREA:	165,573 S.F. (PROPOSED PARCEL "A") 64,174 S.F. (PROPOSED PARCEL "B") TOTAL: 229,747 S.F. (5.27 ACRES ±)
NET SITE AREA:	120,132 S.F. ± (PROPOSED PARCEL "A") 51,008 S.F. ± (PROPOSED PARCEL "B") TOTAL: 171,140 S.F. (3.93 ACRES ±)
BUILDING AREA:	18,037 S.F.
LOT COVERAGE:	15.0% (BASED ON PARCEL "A" ONLY)
BUILDING HEIGHT:	ONE STORY / (28'-0" MAX)
PARKING REQUIRED:	18,037 S.F. / 275 = 66 SPACES MIN., x 1.25 = 83 SPACES MAX.
PARKING PROVIDED:	83 (4 ACCESSIBLE)
ON-SITE LANDSCAPE AREA:	37,310 S.F. (31% COVERAGE)
PRE-SUBMITTAL:	NO. PS16-023, MEETING DATE: 4-4-2016
BLD'G. TYPE OF CONSTRUCTION:	V-B (A.F.E.S.)
ANTICIPATED OCCUPANCIES:	M, B, A-2

### LEGAL DESCRIPTION:

THE WESTERLY 555.00 FEET OF THE NORTHERLY 941.84 FEET OF THE NORTHEAST QUARTER OF SECTION 24, TOWNSHIP 1 SOUTH, RANGE 7 EAST OF THE GILA AND SALT RIVER BASE AND MERIDIAN, MARICOPA COUNTY, ARIZONA.

A PORTION OF THE WESTERLY 555.00 FEET OF THE NORTHERLY 941.84 FEET OF THE NORTHEAST QUARTER OF SECTION 24, TOWNSHIP 1 SOUTH, RANGE 7 EAST OF THE GILA AND SALT RIVER BASE AND MERIDIAN, MARICOPA COUNTY, ARIZONA DESCRIBED AS FOLLOWS:

COMMENCING AT THE BRASS CAP MONUMENT IN HAND HOLE MARKING THE NORTH QUARTER CORNER OF SAID SECTION;

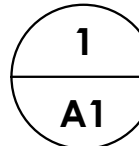
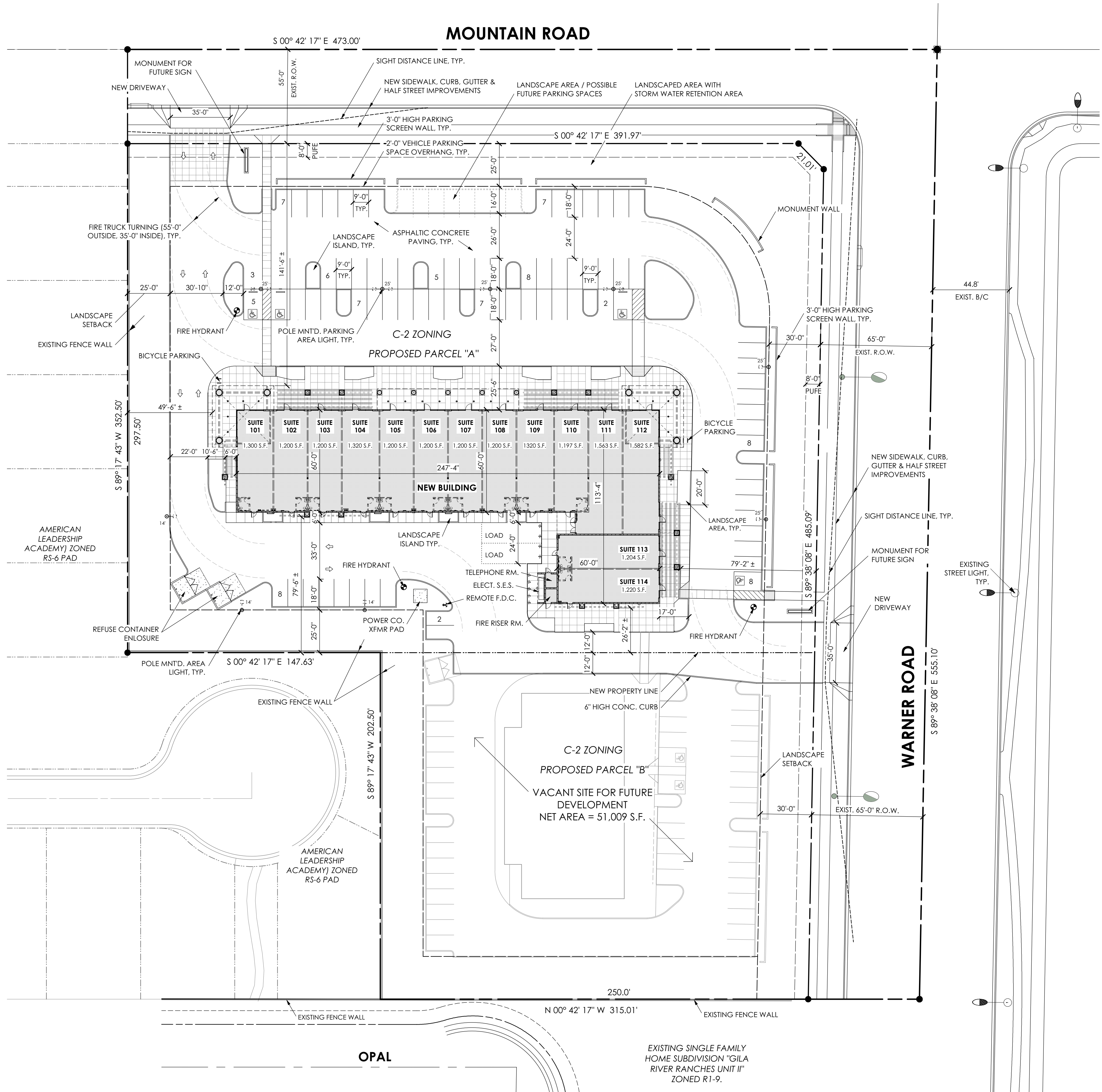
THENCE S00°42'17"E., 473.00 FEET ALONG THE NORTH/SOUTH CENTER OF SECTION LINE TO THE POINT OF BEGINNING;

THENCE N89°17'43"E., 352.50 FEET;

THENCE N00°42'17"W., 466.42 FEET;

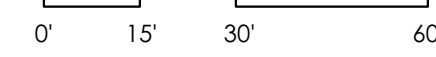
THENCE N89°38'08"W., 352.56 FEET TO THE NORTH/SOUTH CENTER OF SECTION LINE;

THENCE S00°42'17"E., 469.00 FEET ALONG SAID LINE TO THE POINT OF BEGINNING.



**1**  
**A1**

**SITE PLAN**  
Scale: 1" = 30'-0"

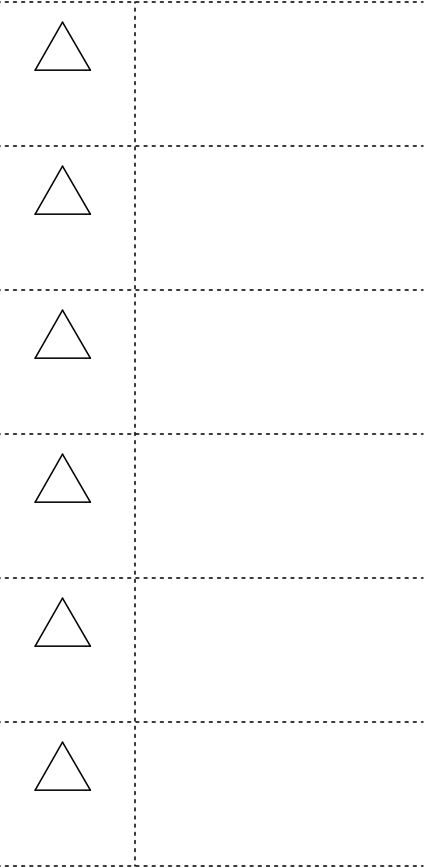


NOTE: SITE PLAN HAS BEEN ROTATED 00° 42' 17" CLOCKWISE



**PRELIMINARY  
NOT FOR  
CONSTRUCTION  
OR RECORDING**

06/17/16 DRAWING DATE



**BELLA VIA  
VILLAGE  
SHOPS**

AT

4425 SOUTH  
MOUNTAIN  
ROAD  
MESA, AZ

BY

**CRAIG / STEVEN  
DEVELOPMENT  
CORPORATION**

PROJECT  
1535

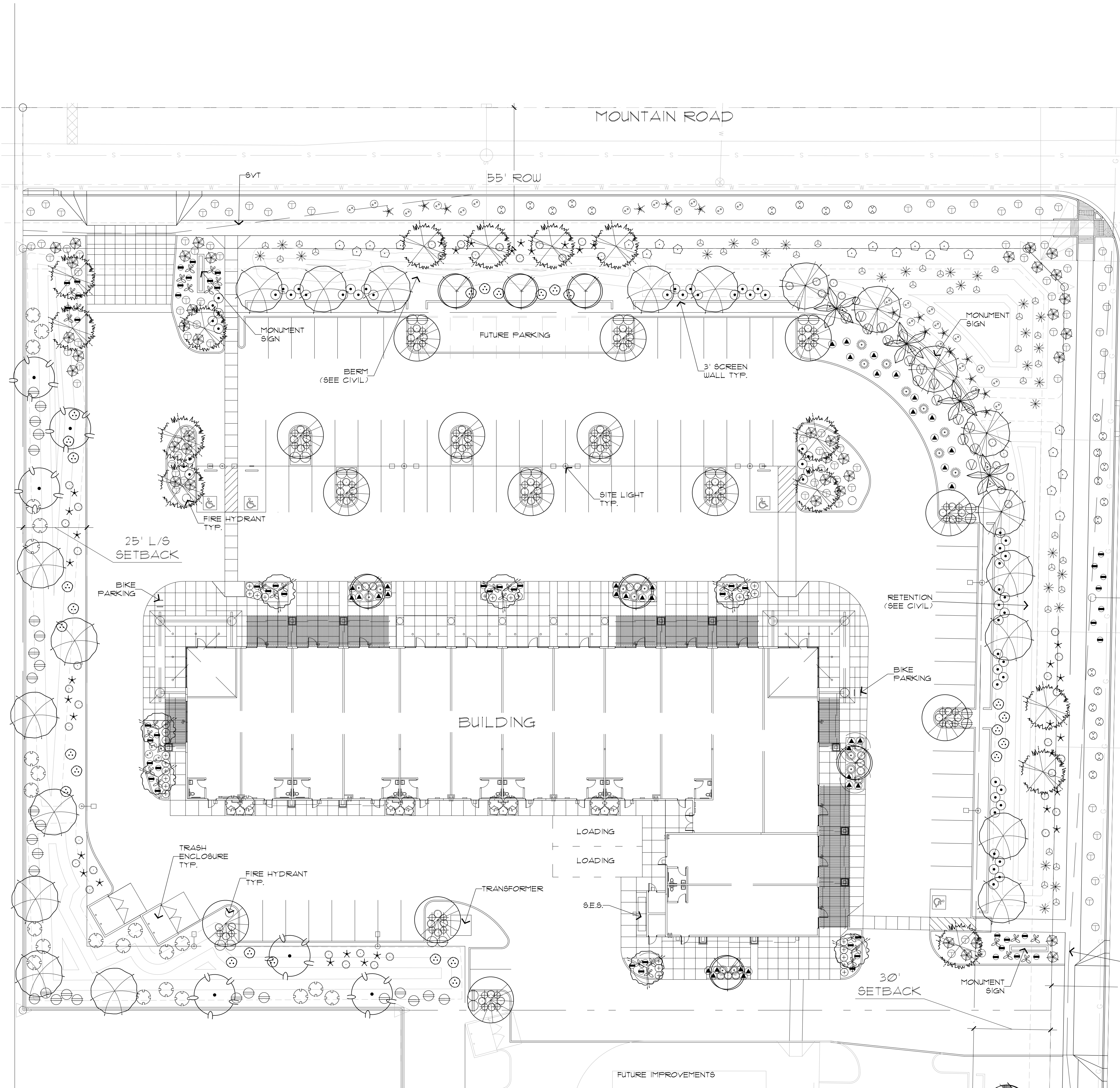
SITE  
PLAN

SHEET NO.

**A1**

OF





PLANT PALETTE

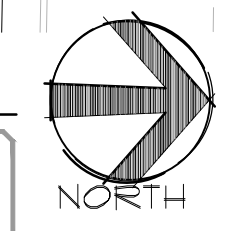
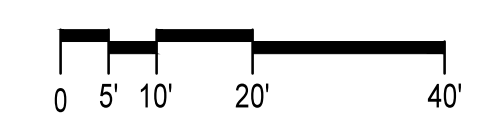
SYMBOL	BOTANICAL NAME	COMMON NAME	SIZE	QTY	COMMENTS
TREES					
	Phoenix dactylifera	Date Palm	25' Clear Trunk	4	Diamond Cut, Straight
	Chitalpa tashkentensis	Chitalpa	36" Box	5	10'4 x 7'W x 2'0" Cal. Min Multi-Trunk Dense Canopy
	Dalbergia Sissoc	Dalbergia	24" Box	6	9'4 x 4'W x 1'0" Cal. Min Standard Trunk Dense Canopy
	Fraxinus 'Fan West'	'Fan West' Ash	24" Box	14	9'4 x 4'W x 1'0" Cal. Min Standard Trunk Dense Canopy
	Quercus virginiana 'Heritage'	'Heritage' Live Oak	24" Box	16	9'4 x 4'W x 1'0" Cal. Min Standard Trunk Dense Canopy
	Caesalpinia mexicana	Mexican Bird of Paradise	15 Gal.	7	5'4 x 3'W x 1'0" Cal. Min Multi-Trunk Dense Canopy
	Sophora secundiflora	Texas Mountain Laurel	15 Gal.	7	3'4 x 2'W x .75" Cal. Min Multi-Trunk Dense Canopy
	Olea europae 'Wilson'	'Wilson' Fruitless Olive	36" Box	14	8'4 x 6'W x 2'0" Cal. Min Multi-Trunk Dense Canopy
CACTI/ACCENTS					
	Agave desmetiana	Agave	5-Gal	33	As Per Plan
	Aloe Barbadosensis	Medical Aloe	5-Gal	15	As Per Plan
	Hesperaloe Parviflora	Red Yucca	1-Gal	54	As Per Plan
	Dasylirion Longissimum	Toothless Spoon	5-Gal	20	As Per Plan
	Hesperaloe Funifera	Giant Hesperaloe	5-Gal	32	As Per Plan
	Muhlenbergia Rigida	'Nashville' Grass	1-Gal	26	As Per Plan
	Bougainvillea 'Barbara Karst'	'Barbara Karst' Bougainvillea	5-Gal	9	As Per Plan
	Pedilanthus Macrocarpus	Lady Slipper	5-Gal	33	As Per Plan
SHRUBS					
	Nerium 'Petite Pink'	'Petite Pink' Oleander	5-Gal	26	As Per Plan
	Tecoma 'Orange Jubilee'	'Orange Jubilee' Tecoma	5-Gal	31	As Per Plan
	Tecoma 'Sparky'	'Sparky' Tecoma	5-Gal	15	As Per Plan
	Ruellia Peninsularis	Baja Ruellia	5-Gal	56	As Per Plan
	Myrtus 'Compacta'	'Compact' Myrtle	5-Gal	29	As Per Plan
	Leucophyllum langmaniae	'Rio Bravo' Sage	5-Gal	58	As Per Plan
	Eremophila Hygrophana	Blue Bells	5-Gal	33	As Per Plan
	Eremophila maculata 'Outback Sunrise'	'Outback Sunrise' Emu Bush	1-Gal	24	As Per Plan
GROUND COVERS					
	Lantana 'New Gold'	'New Gold' Lantana	1-Gal	86	As Per Plan
	Lantana 'Bandara'	'Bandara' Red Lantana	1-Gal	27	As Per Plan
	Teucrium Chamaedrys	Germander	1-Gal	37	As Per Plan
	Aloe 'Blue Elf'	'Blue Elf' Aloe	1-Gal	53	As Per Plan
	Wedelia Trilobata	Wedelia	1-Gal	114	As Per Plan
	Bouteloua 'Blonde Ambition'	'Blonde Ambition' Grama	1-Gal	31	As Per Plan
MISCELLANEOUS					
	Decomposed Granite - (Size: 1/2" Screened - Color: Apache Brown or Approved Equal) 2" depth in all planting areas (Typ)				

CITY OF MESA LS REQUIREMENTS

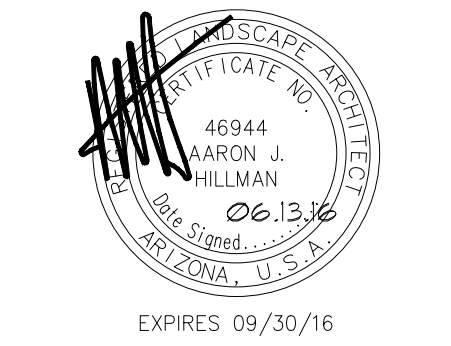
	REQUIRED	PROVIDED
RIGHT OF WAY / STREET FRONTAGE MOUNTAIN ROAD (356 FT.)	TREES	17
	SHRUBS	101
WARNER ROAD (247 FT.)	TREES	11
	SHRUBS	88
PARKING LOT ISLAND (8)	TREES	20
	SHRUBS	115
PERIMETER (423 LF)	TREES	13
	SHRUBS	85

PLANTING PLAN

SCALE: 1"=20'-0"



480-726-0595  
3545 East Menlo Circle  
Mesa, Arizona 85213  
**Functional Formation  
Architecture, pllc**



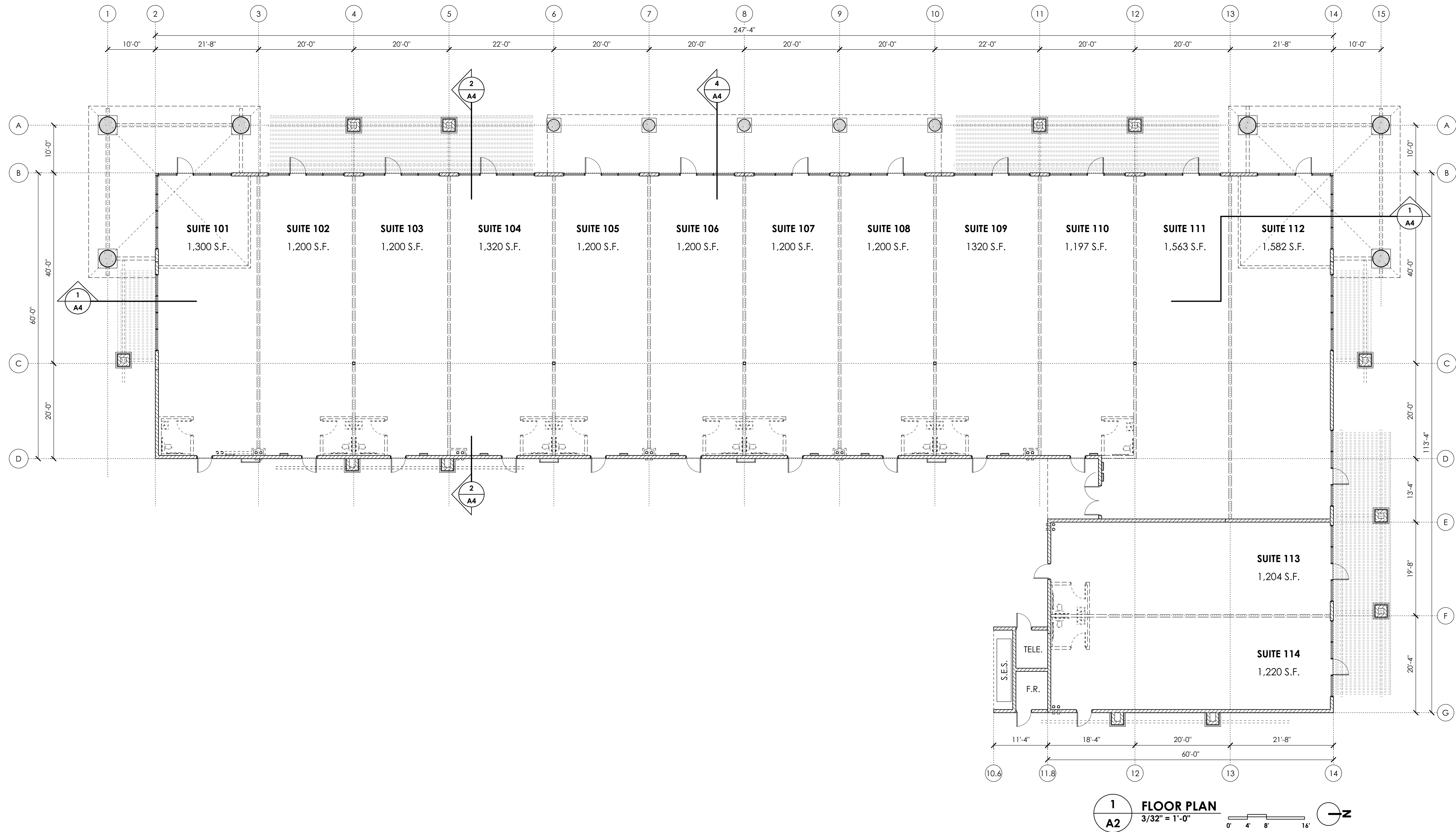
06/13/16 DRAWING DATE


**BELLA VIA  
VILLAGE  
SHOPS**  
  
AT  
  
4425 SOUTH  
MOUNTAIN  
ROAD  
MESA, AZ  
  
BY  
  
**CRAIG / STEVEN  
DEVELOPMENT  
CORPORATION**

COLLABORATIVE V  
DESIGN STUDIO INC.  
7116 EAST 1ST AVENUE,  
SUITE 103  
SCOTTSDALE, ARIZONA  
85251  
OFFICE: 480-347-0590  
FAX: 480-656-6012

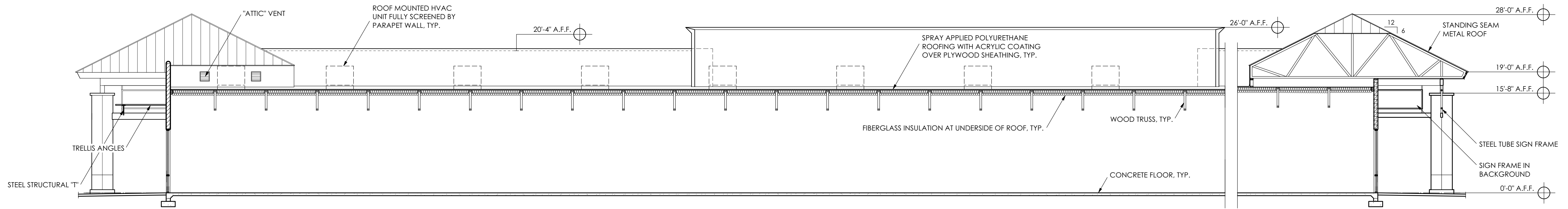






06/17/16	DRAWING DATE
△	
△	
△	
△	
△	
△	



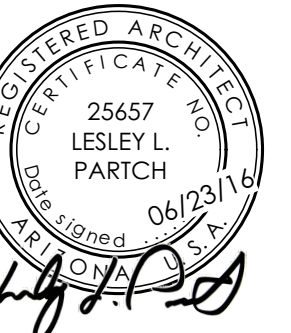


1 NORTH-SOUTH BUILDING SECTION  
SCALE: 1/8" = 1'-0"

480-726-0595

3545 East Menlo Circle  
Mesa, Arizona 85213

Functional Formation  
Architecture, pllc



EXPIRES 12/31/2018

PRELIMINARY  
NOT FOR  
CONSTRUCTION  
OR RECORDING

06/17/16 DRAWING DATE



BELLA VIA  
VILLAGE  
SHOPS

AT

4425 SOUTH  
MOUNTAIN  
ROAD  
MESA, AZ

BY

CRAIG / STEVEN  
DEVELOPMENT  
CORPORATION

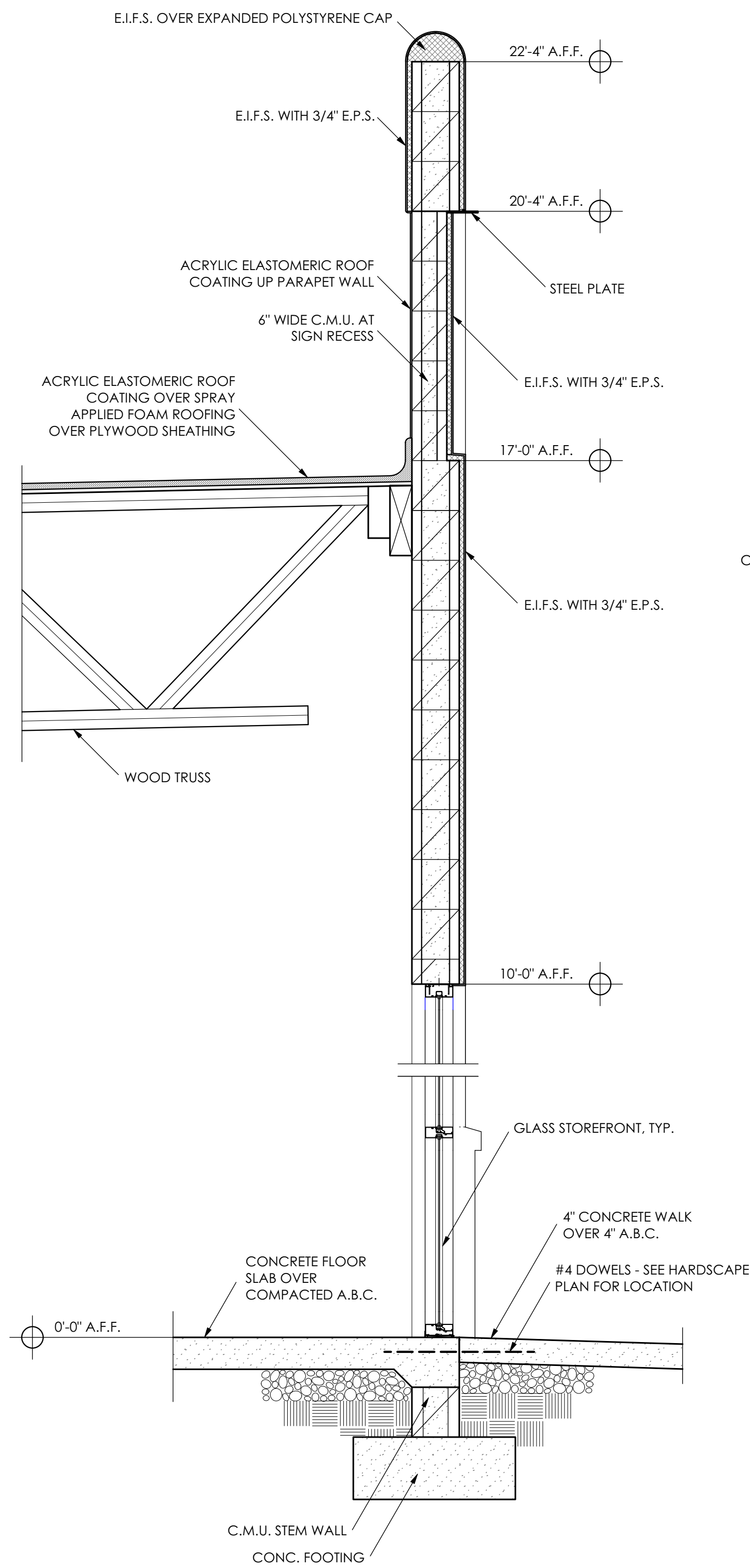
PROJECT  
1535

BUILDING  
SECTIONS

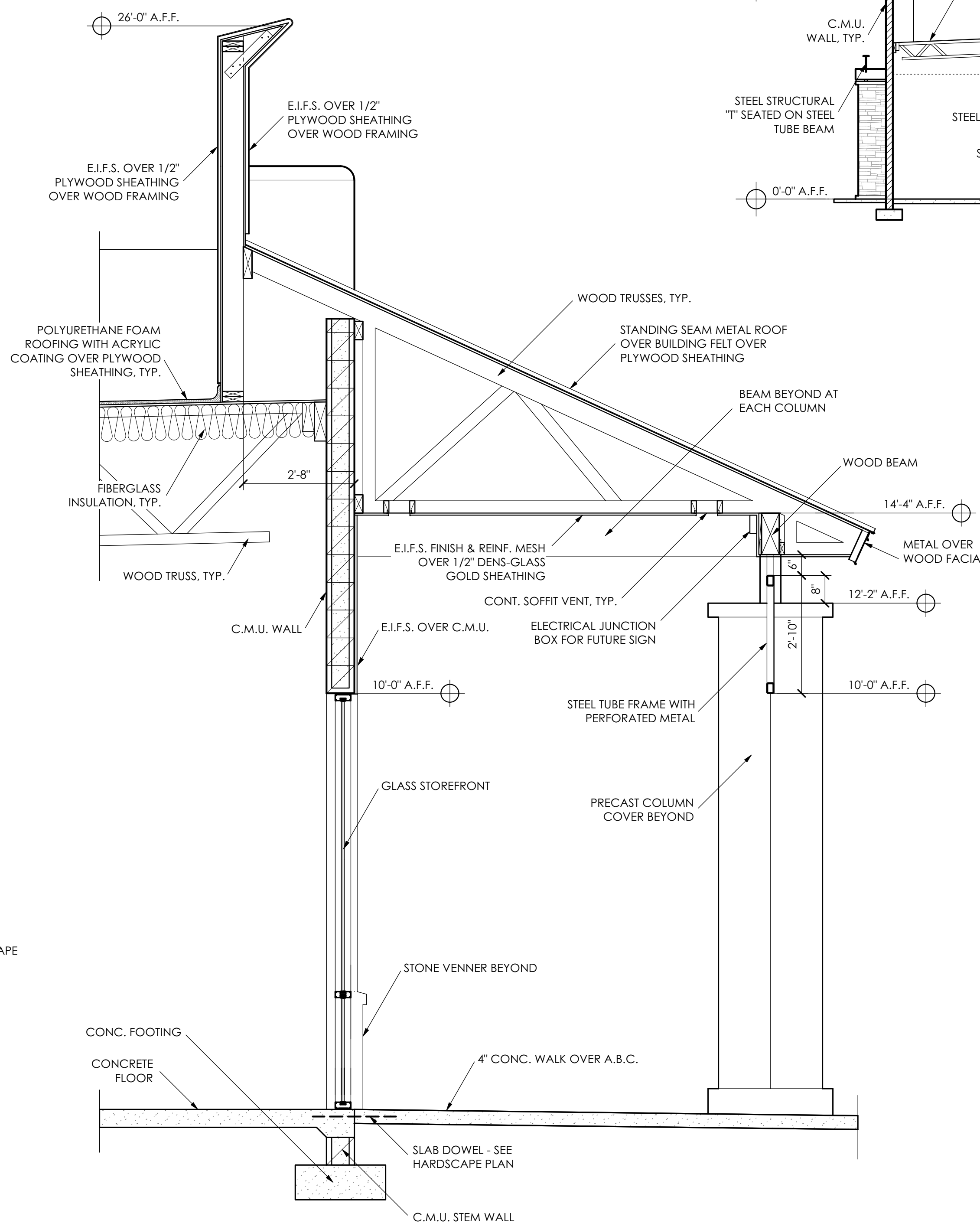
SHEET NO.

A4

OF



3 WALL SECTION  
SCALE: 3/4" = 1'-0"



4 WALL SECTION AT COVERED WALKWAY  
SCALE: 1/2" = 1'-0"



EXTERIOR MATERIALS

STANDING SEAM METAL ROOF: SLATE GRAY BY PAC-CLAD, OR APPROVED EQUAL.

E.I.F.S.: INTEGRAL COLOR TO MATCH DUNN-EDWARDS PIGEON GRAY DE6214; AND INTEGRAL COLOR TO MATCH DUNN-EDWARDS FINE GRAIN DE6213 (AT WALLS WHERE RAISED PARAPET OCCURS AT MID SECTION OF WEST ELEVATION AND AT EAST ELEVATION).

E.I.F.S. OVER P.S. MOLDING: INTEGRAL COLOR TO MATCH DUNN-EDWARDS PIGEON GRAY, DE6214.

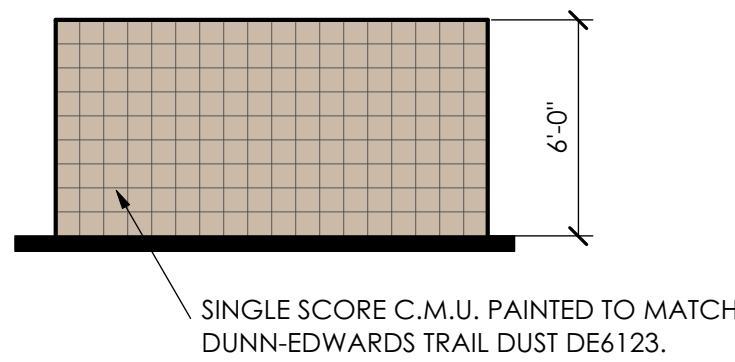
STONE VENEER: MOUNTAIN LEDGE BUCKSKIN AS MANF. BY ELDORADO STONE.

PRECAST CONCRETE COLUMNS: PEBBLE BY ARISTONE AT COVERED WALK, SAGE BY ARISTONE AT "TOWER" COLUMNS

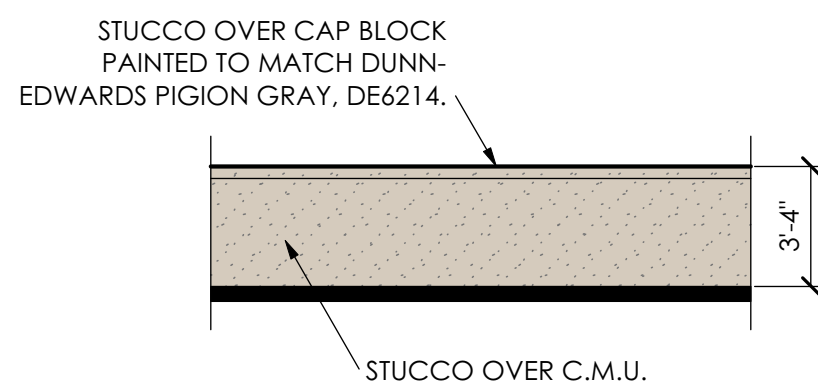
STEEL TRELLIS & STEEL BEAMS: PAINTED TO MATCH DUNN-EDWARDS LOG CABIN DEA162.

8" x 8" x 14" C.M.U. (RUNNING BOND), TYP.: PAINTED TO MATCH DUNN-EDWARDS TRAIL DUST DE6123.

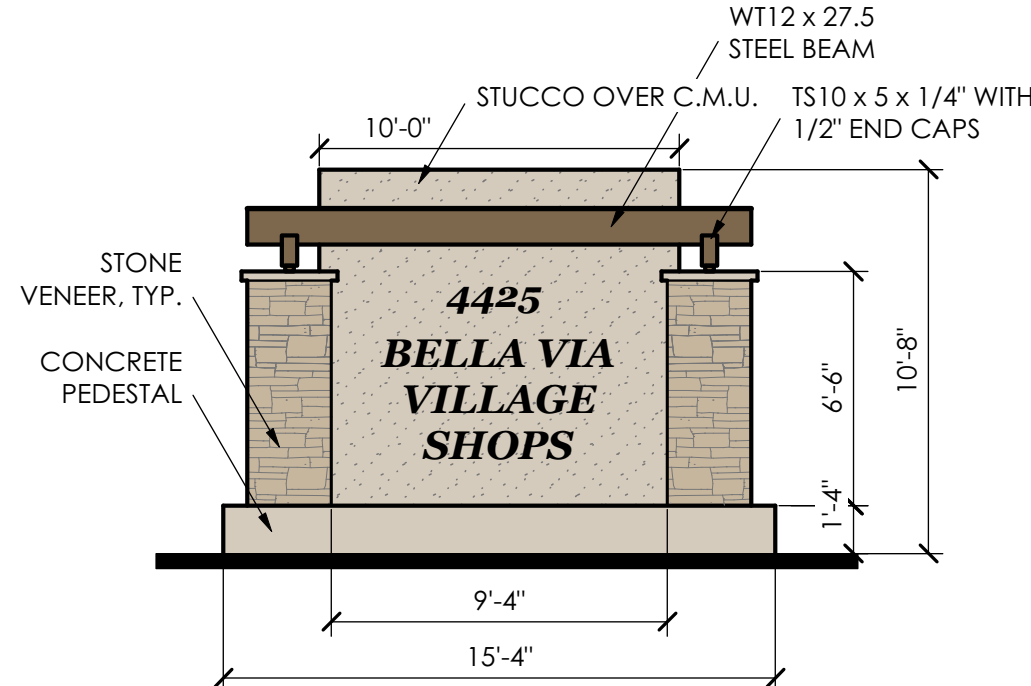
STOREFRONT WINDOWS: CLEAR GLASS IN DARK ANODIZED BRONZE FINISH.



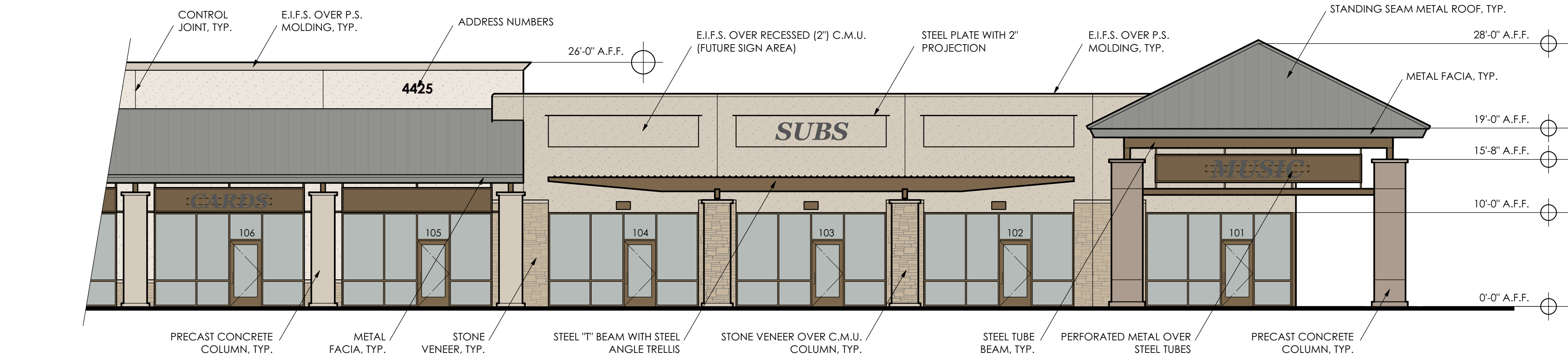
5 REFUSE ENCLOSURE WALL ELEVATION  
SCALE: 1/8" = 1'-0"



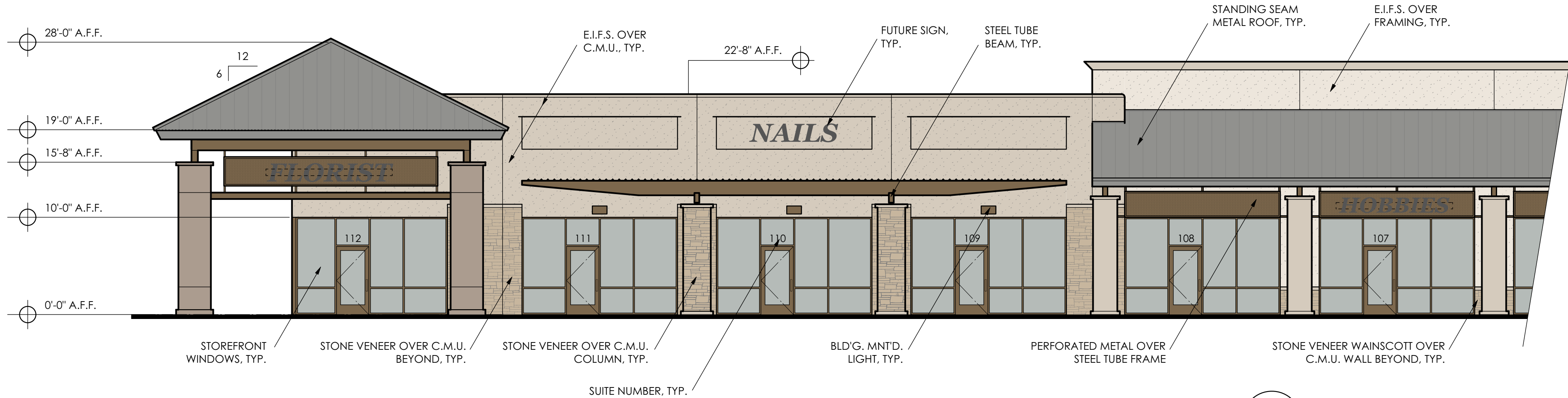
6 PARKING SCREEN WALL ELEVATION  
SCALE: 1/8" = 1'-0"



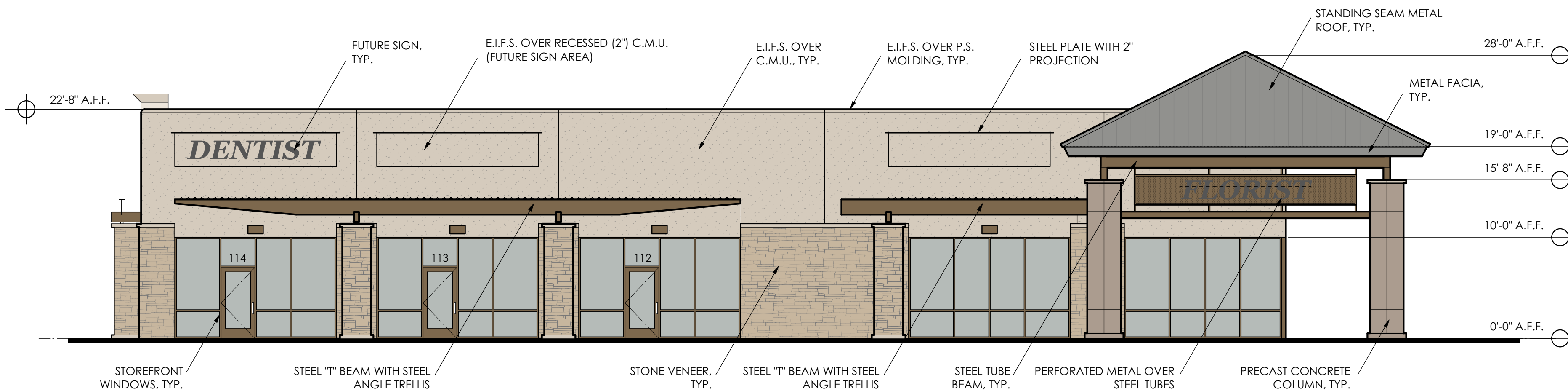
7 MONUMENT ELEVATION  
SCALE: 1/8" = 1'-0"



1 WEST ELEVATION (SOUTH END)  
SCALE: 1/8" = 1'-0"



2 WEST ELEVATION (NORTH END)  
SCALE: 1/8" = 1'-0"



3 NORTH ELEVATION  
SCALE: 1/8" = 1'-0"



4 MONUMENT ELEVATION (AT SCREEN WALL)  
SCALE: 1/8" = 1'-0"



PRELIMINARY  
NOT FOR  
CONSTRUCTION  
OR RECORDING

06/17/16 DRAWING DATE

△	
△	
△	
△	
△	
△	
△	

BELLA VIA  
VILLAGE  
SHOPS

AT  
4425 SOUTH  
MOUNTAIN  
ROAD  
MESA, AZ

BY  
CRAIG / STEVEN  
DEVELOPMENT  
CORPORATION

PROJECT  
1535 BUILDING  
ELEVATIONS

SHEET NO.  
A3.1  
OF



EXTERIOR MATERIALS

STANDING SEAM METAL ROOF: SLATE GRAY BY PAC-CLAD, OR APPROVED EQUAL.

E.I.F.S.: INTEGRAL COLOR TO MATCH DUNN-EDWARDS PIGEON GRAY DE6214; AND INTEGRAL COLOR TO MATCH DUNN-EDWARDS FINE GRAIN DE6213 (AT WALLS WHERE RAISED PARAPET OCCURS AT MID SECTION OF WEST ELEVATION AND AT EAST ELEVATION).

E.I.F.S. OVER P.S. MOLDING: INTEGRAL COLOR TO MATCH DUNN-EDWARDS PIGEON GRAY, DE6214.

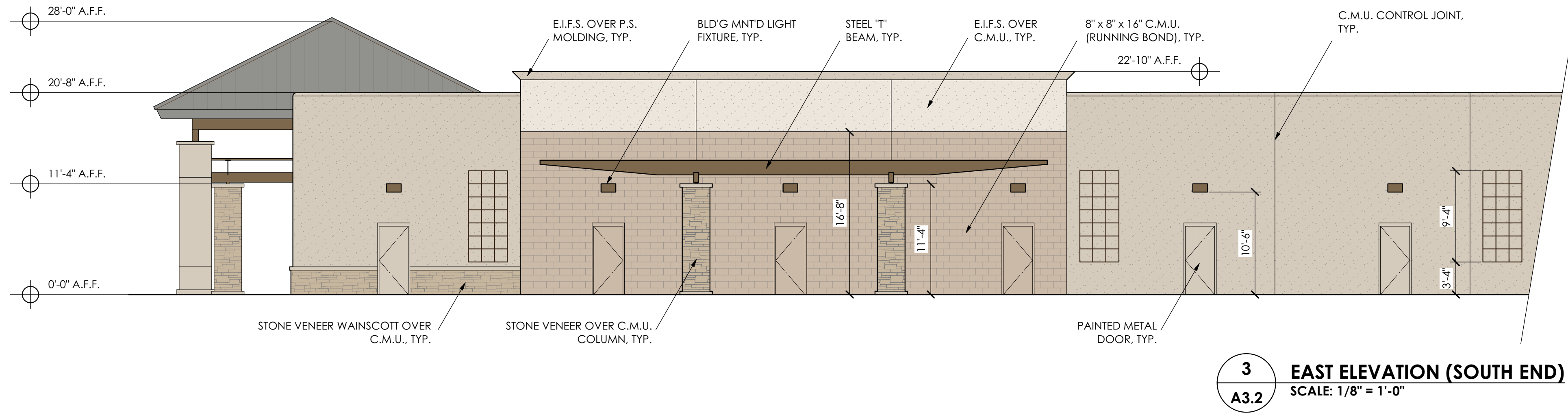
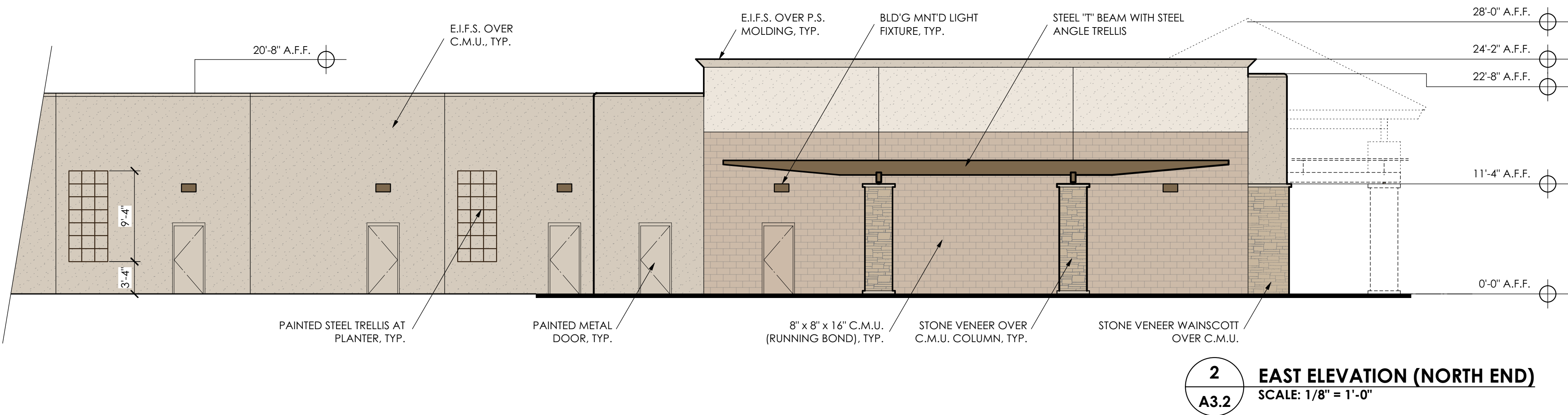
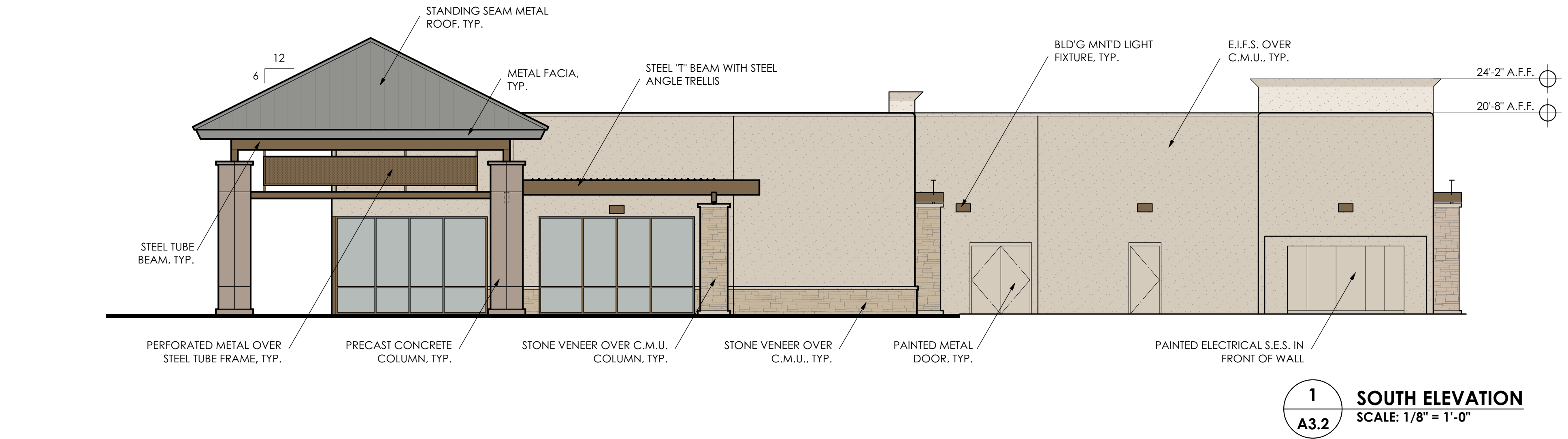
STONE VENEER: MOUNTAIN LEDGE BUCKSKIN AS MANF. BY ELDORADO STONE.

PRECAST CONCRETE COLUMNS: PEBBLE BY ARISTONE AT COVERED WALK, SAGE BY ARISTONE AT "TOWER" COLUMNS

STEEL TRELLIS & STEEL BEAMS: PAINTED TO MATCH DUNN-EDWARDS LOG CABIN DEA162.

8" x 8" x 16" C.M.U. (RUNNING BOND), TYP.: PAINTED TO MATCH DUNN-EDWARDS TRAIL DUST DE6123.

STOREFRONT WINDOWS: CLEAR GLASS IN DARK ANODIZED BRONZE FINISH.



PRELIMINARY  
NOT FOR  
CONSTRUCTION  
OR RECORDING

06/17/16 DRAWING DATE

△	
△	
△	
△	
△	
△	

BELLA VIA  
VILLAGE  
SHOPS

AT

4425 SOUTH  
MOUNTAIN  
ROAD  
MESA, AZ

BY

CRAIG / STEVEN  
DEVELOPMENT  
CORPORATION

PROJECT  
1535 BUILDING  
ELEVATIONS

SHEET NO.

A3.2  
OF

# BELLA VIA VILLAGE SHOPS

MATERIAL / COLOR SAMPLES

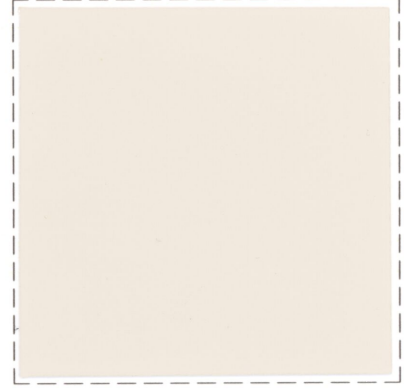
6/21/16



**STEEL TRELLIS &  
BEAMS:**  
DEA162 LOG CABIN



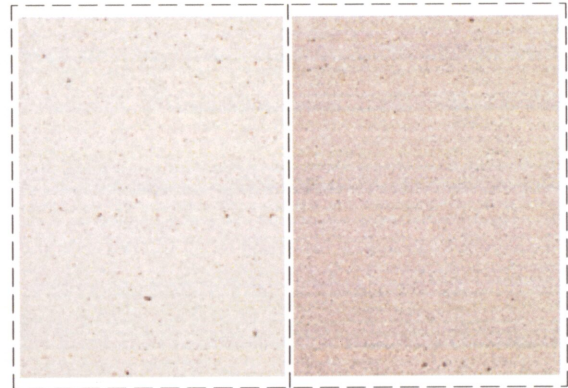
**E.I.F.S. & E.I.F.S. OVER  
P.S. MOLDING**  
DE6214 PIGEON GRAY



**E.I.F.S. AT RAISED  
PARAPET WALLS**  
DE6213 FINE GRAIN



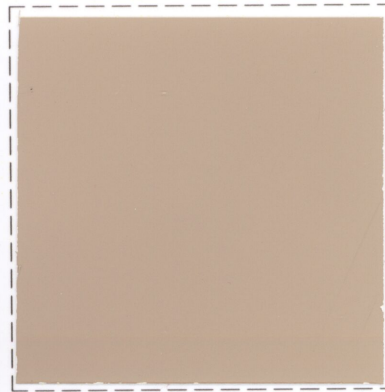
**STONE VENEER:**  
MOUNTAIN LEDGE BUCKSKIN BY  
ELDORADO STONE



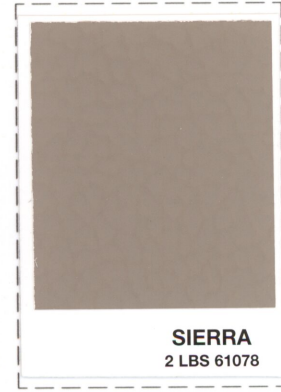
**PRECAST CONCRETE  
COLUMNS:**  
PEBBLE / SAGE BY ARISTONE



**STANDING SEAM METAL  
ROOFING:**  
SLATE GRAY BY PAC-CLAD



**8" x 8" x 16" C.M.U.:**  
DE6123 TRAILDUST



**INTEGRAL COLOR  
CONCRETE:**  
SIERRA BY DAVIS  
COLORS





# WSR LED

## Architectural Wall Sconce



Inverted available with  
WLU option only.

### Specifications Luminaire

**Height:** 7-1/4"  
(18.4 cm)

**Width:** 18"  
(45.7 cm)

**Depth:** 9"  
(22.8 cm)

**Weight:** 17 lbs  
(7.7 kg)

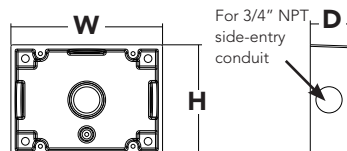


### Optional Back Box (BBW)

**Height:** 4"  
(10.2 cm)

**Width:** 5-1/2"  
(14.0 cm)

**Depth:** 1-1/2"  
(3.8 cm)



Catalog  
Number

Notes

Type

Hit the Tab key or mouse over the page to see all interactive elements.

### Introduction

The classic Architectural Wall Sconce is now available with the latest in LED technology. The result is a long-life, maintenance-free product with typical energy savings of 75% compared to metal halide versions. The integral battery backup option provides emergency egress lighting, without the use of a back-box or remote gear, so installations maintain their aesthetic integrity.

The WSR LED is ideal for replacing existing 50 – 175W metal halide wall-mounted products. The expected service life is 20+ years of nighttime use.

### Ordering Information

**EXAMPLE:** WSR LED 2 10A700/40K SR3 MVOLT DDBTXD

WSR LED							
Series	Light Engines	Performance Package	Distribution	Voltage	Mounting	Options <sup>3</sup>	Finish (required)
WSR LED	1 One engine (10 LEDs) 2 Two engines (20 LEDs)	<b>700 mA options:</b> 10A700/30K 3000K 10A700/40K 4000K 10A700/50K 5000K	SR2 Type II SR3 Type III SR4 Type IV	MVOLT <sup>1</sup> 120 <sup>1</sup> 208 <sup>1</sup> 240 <sup>1</sup> 277 <sup>1</sup> 347 480	<b>Shipped included</b> (blank) Surface mount <b>Shipped separately<sup>2</sup></b> BBW Surface-mounted back box UT5 Uptilt 5 degrees	<b>Shipped installed</b> PE Photoelectric cell, button type <sup>4,5</sup> SF Single fuse (120, 277, 347V) <sup>4</sup> DF Double fuse (208, 240, 480V) <sup>4</sup> DMG 0-10V dimming driver (no controls) ELCW Emergency battery backup <sup>6</sup> WLU Wet location door for up orientation <sup>7</sup> PIR Motion/ambient light sensor <sup>8</sup> DS Dual switching <sup>9</sup> <b>Shipped separately</b> VG Vandal guard WG Wire guard	DDBXD Dark bronze DBLXD Black DNAXD Natural aluminum DWHXD White DSSXD Sandstone DDBTXD Textured dark bronze DBLBXD Textured black DNATXD Textured natural aluminum DWHGXD Textured white DSSTXD Textured sandstone

### Emergency Battery Operation

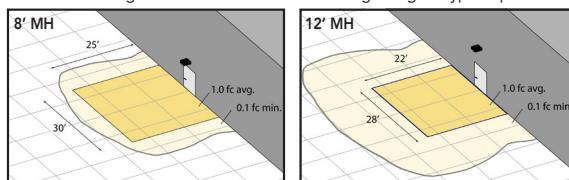
The emergency battery backup (ELCW option) is integral to the luminaire - no external housing required! This design provides reliable emergency operation while maintaining the aesthetics of the product.

All ELCW configurations include an independent secondary driver with an integral relay to immediately detect AC power loss. Dual light engines are wired in parallel so both engines operate in emergency mode and provide additional component redundancy. These design features meet various interpretations of NFPA 70/NEC 2008 - 700.16

The emergency battery will power the luminaire for a minimum duration of 90 minutes (maximum duration of three hours) from the time supply power is lost, per International Building Code Section 1006 and NFPA 101 Life Safety Code Section 7.9, provided luminaires are mounted at an appropriate height and illuminate an open space with no major obstructions.

The examples below show illuminance of 1 fc average and 0.1 fc minimum of the single-engine Type IV product in emergency mode.

WSR LED 1 10A700/40K SR4  
MVOLT ELCW  
10' x 10' Gridlines  
8' and 12' Mounting Height



### NOTES

- 1 MVOLT driver operates on any line voltage from 120-277V (50/60 Hz). Specify 120, 208, 240 or 277 options only when ordering with photocell (PE), fusing (SF, DF), or dual switching (DS).
- 2 May also be ordered separately as an accessory. Ex: WSBW DDBXD U. Must specify finish.
- 3 Must be ordered with fixture; cannot be field installed.
- 4 Not available with MVOLT option. Button photocell (PE) can be ordered with a dedicated voltage option. Single fuse (SF) requires 120, 277 or 347 voltage option. Double fuse (DF) requires 208, 240 or 480 voltage option.
- 5 Not available with 480V option. Not available with motion/ambient light sensor (PIR).
- 6 Integral battery pack is rated for -20° to 60°C operating temperature. ELCW warranty is 3-year period. Not available with 347V or 480V. Not available with WLU.
- 7 WLU not available with PIR or ELCW.
- 8 Specifies the SensorSwitch SFOD-7-ODP control (photocell included); see Motion Sensor Guide for details. Includes ambient light sensor. Not available with "PE" option (button type photocell). Dimming driver standard. Not available with WLU, VG or WG.
- 9 Provides 50/50 luminaire operation via two independent drivers and light engines on two separate circuits. Not available with one engine, MVOLT, ELCW, WLU, SF, or DF. Must specify voltage; voltage must be the same for both drivers. When ordered with photocell (PE) or motion sensor (PIR), only the primary power source leads will be controlled.



One Lithonia Way • Conyers, Georgia 30012 • Phone: 800.279.8041 • Fax: 770.918.1209 • [www.lithonia.com](http://www.lithonia.com)  
© 2011-2015 Acuity Brands Lighting, Inc. All rights reserved.

WSR-LED  
Rev. 08/11/15

## Performance Data

### Lumen Output

Lumen values are from photometric tests performed in accordance with IESNA LM-79-08. Data is considered to be representative of the configurations shown, within the tolerances allowed by Lighting Facts.

Light Engines	Drive Current (mA)	Performance Package	System Watts (MVOLT <sup>1</sup> )	Dist. Type	40K (4000K, 70 CRI)				
					Nominal Lumens	B	U	G	LPW
1 (10 LEDs)	700	10A700/--K	24W	SR2	2,005	1	0	1	84
				SR3	2,029	1	0	1	84
				SR4	1,959	1	0	1	82
2 (20 LEDs)	700	10A700/--K	47W	SR2	3,944	1	0	1	84
				SR3	4,028	1	0	1	86
				SR4	3,851	1	0	1	82

1 See electrical load chart for 347/480V system watts.

### Lumen Ambient Temperature (LAT) Multipliers

Use these factors to determine relative lumen output for average ambient temperatures from 0-40°C (32-104°F).

Ambient		Lumen Multiplier
0°C	32°F	1.10
10°C	50°F	1.06
20°C	68°F	1.02
25°C	77°F	1.00
30°C	86°F	0.98
40°C	104°F	0.92

### Projected LED Lumen Maintenance

Data references the extrapolated performance projections for the **WSR LED 2 10A700** platform in a **25°C ambient**, based on 10,000 hours of LED testing (tested per IESNA LM-80-08 and projected per IESNA TM-21-11).

To calculate LLF, use the lumen maintenance factor that corresponds to the desired number of operating hours below. For other lumen maintenance values, contact factory.

Operating Hours	0	25,000	50,000	100,000
Lumen Maintenance Factor	1.0	0.94	0.88	0.77

### Electrical Load

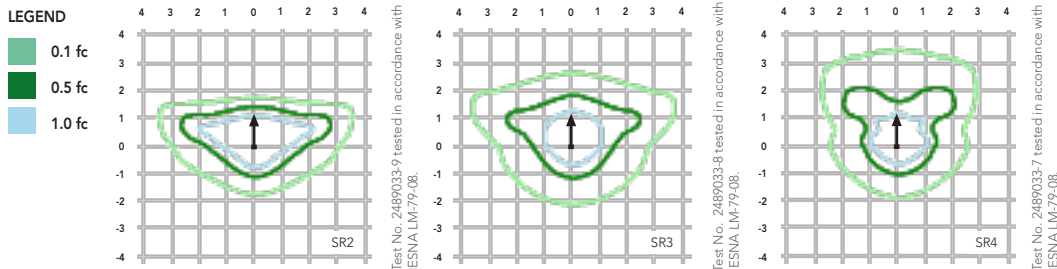
Light Engines	Drive Current (mA)	System Watts	Current (A)					
			120	208	240	277	347	480
1	700	24W	0.24	0.14	0.12	0.1	-	-
		29W <sup>1</sup>	-	-	-	-	0.09	0.07
2	700	47W	0.44	0.27	0.23	0.20	-	-
		53W <sup>1</sup>	-	-	-	-	0.17	0.12

1 Higher wattage is due to electrical losses from step-down transformer.

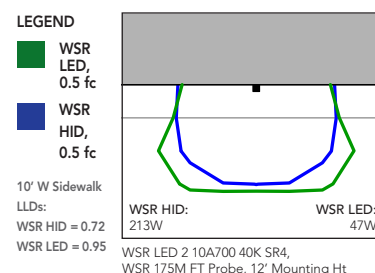
## Photometric Diagrams

To see complete photometric reports or download .ies files for this product, visit Lithonia Lighting's [WSR LED homepage](#).

Isfootcandle plots for the WSR LED 2 10A700/40K SR2, SR3, and SR4. Distances are in units of mounting height (12').



Distribution overlay comparison to 175W metal halide.



## FEATURES & SPECIFICATIONS

### INTENDED USE

The classic architectural shape of the WSR LED was designed for applications such as hospitals, schools, malls, restaurants, and commercial buildings. The long life LEDs and driver make this luminaire nearly maintenance-free.

### CONSTRUCTION

The single-piece die-cast aluminum housing integrates secondary heat sinks to optimize thermal transfer from the internal light engine heat sinks and promote long life. The driver is mounted in direct contact with the casting for a low operating temperature and long life. The die-cast door frame is fully gasketed with a one-piece solid silicone gasket to keep out moisture and dust, providing an IP65 rating for the luminaire.

### FINISH

Exterior parts are protected by a zinc-infused Super Durable TGIC thermoset powder coat finish that provides superior resistance to corrosion and weathering. A tightly controlled multi-stage process ensures a minimum 3 mils thickness for a finish that can withstand extreme climate changes without cracking or peeling. Standard Super Durable colors include dark bronze, black, natural aluminum, sandstone and white. Available in textured and non-textured finishes.

### OPTICS

Precision-molded acrylic lenses are engineered for superior distribution, uniformity, and spacing in wall-mount applications. Light engines are 4000K (70 CRI). The WSR LED has zero uplight and qualifies as a Nighttime Friendly™ product, meaning it is consistent with the LEED® and Green Globes™ criteria for eliminating wasteful uplight.

### ELECTRICAL

Light engine(s) consist of 10 high-efficacy LEDs mounted to a metal core circuit board and integral aluminum heat sinks to maximize heat dissipation and promote long life (100,000 hrs at 25°C, L77). Class 2 electronic driver has a power factor >90%, THD <20%. Easily-serviceable surge protection device meets a minimum Category B (per ANSI/IEEE C62.41.2).

### INSTALLATION

A universal mounting plate with integral mounting support arms allows the fixture to hinge down for easy access while making wiring connections.

### LISTINGS

CSA certified to U.S. and Canadian standards. Light engines are IP66 rated; luminaire is IP65 rated and suitable for wet locations when mounted with the lenses down. WLU option offers wet location listing in "up" orientation. Rated for -30°C minimum ambient.

DesignLights Consortium® (DLC) qualified product. Not all versions of this product may be DLC qualified. Please check the DLC Qualified Products List at [www.designlights.org](http://www.designlights.org) to confirm which versions are qualified.

### WARRANTY

Five year limited warranty. Full warranty terms located at [www.acuitybrands.com/CustomerResources/Terms\\_and\\_conditions.aspx](http://www.acuitybrands.com/CustomerResources/Terms_and_conditions.aspx).

**Note:** Actual performance may differ as a result of end-user environment and application. All values are design or typical values, measured under laboratory conditions at 25 °C. Specifications subject to change without notice.





# D-Series LED, Size 1

Area Luminaire

## Refined Styling. Sophisticated Technology.

The modern styling of the D-Series LED Area, Size 1 luminaire is striking yet unobtrusive—making a bold, progressive statement even as it blends seamlessly with its environment. Its outstanding photometric performance results in sites with excellent uniformity, greater pole spacing and lower power density.

### Key Features:

- Energy savings of up to 75% vs. comparable metal halide luminaires; saves \$263 per luminaire, per year over 750W metal halide
- 20+ years expected service life (with lumen maintenance up to L99/100,000 hours at 25°C)
- Proprietary precision optics deliver exceptional uniformity and allow for increased spacing, resulting in fewer poles and lower overall cost
- Control options from Acuity Controls include standalone photocell, switched bi-level, part-night scheduled dimming, multi-level motion sensor, and ROAM® wireless monitoring and control

#### DSX1

Model	Input Watts	Lumens	Metal Halide Replacement
DSX1 LED 40C 1000 40K T3M	138W	14,888	400W
DSX1 LED 60C 1000 40K T3M	209W	21,910	750W



### Quick Facts:

- Up to 750W MH replacement
- Lumen packages from 6,000 to 23,000 lumens
- Efficacies up to 130 lumens per watt
- 14 factory-rotatable distributions available
- Available in 3000K, 4000K & 5000K CCT and Amber LED
- Weight: 27 lbs; EPA: 1.0 ft<sup>2</sup>

## D-Series LED Area Luminaire, Size 1

## Ordering Information

**EXAMPLE:** DSX1 LED 60C 1000 40K T3M MVOLT SPA DDBXD

## DSX1 LED

Series	LEDs	Drive Current		Color Temperature		Distribution				Voltage	Mounting				
DSX1 LED	<b>Forward optics</b>	530	530 mA	30K	3000 K	T1S	Type I Short	T5VS	Type V Very Short	11VOLT	<b>Shipped included</b>				
	30C 30 LEDs (one engine)	700	700 mA	40K	4000 K	T2S	Type II Short	T5V	Type V Short	120	SPA	Square pole mounting			
	40C 40 LEDs (two engines)	1000	1000 mA (1 A)	50K	5000 K	AMBPC	Amber phosphor converted	T2M	Type II Medium	T5M	Type V Medium	208	RPA	Round pole mounting	
								T3S	Type III Short	T5W	Type V Wide	240	WBA	Wall bracket	
	60C 60 LEDs (two engines)								T3M	Type III Medium	BLC	Backlight control	277	SPUMBA	Square pole universal mounting adaptor
									T4M	Type IV Medium	LCCO	Left corner cutoff optic	347	RPUMBA	Round pole universal mounting adaptor
		<b>Rotated optics</b>					TFTM	Forward Throw Medium	RCCO	Right corner cutoff optic	480	<b>Shipped separately</b>			
		60C 60 LEDs (two engines)										KMA8 DDBXD U	Mast arm mounting bracket adaptor (specify finish)		

**Control Options** (*0-10V dimming drivers are standard*)

## Shipped installed

<b>PER</b>	NEMA twist-lock receptacle only (no controls)	<b>PIR</b>	Motion/ambient sensor, 8-15' mounting height, ambient sensor enabled at 5fc
<b>PER5</b>	Five-wire receptacle only (no controls)	<b>PIRH</b>	Motion/ambient sensor, 15-30' mounting height, ambient sensor enabled at 5fc
<b>PER7</b>	Seven-wire receptacle only (no controls)	<b>PIR1FC3V</b>	Motion/ambient sensor, 8-15' mounting height, ambient sensor enabled at 1fc
<b>DS</b>	Dual switching	<b>PIRH1FC3V</b>	Motion/ambient sensor, 15-30' mounting height, ambient sensor enabled at 1fc
<b>BL30</b>	Bi-level switched dimming, 30%	<b>PNMTDD3</b>	Part night, dim till dawn
<b>BL50</b>	Bi-level switched dimming, 50%	<b>PNMT5D3</b>	Part night, dim 5 hrs
		<b>PNMT6D3</b>	Part night, dim 6 hrs
		<b>PNMT7D3</b>	Part night, dim 7 hrs

## Shipped installed

HS	House-side shield
SF	Single fuse (120, 277, 347V)
DF	Double fuse (208, 240, 480V)
L90	Left rotated optics
R90	Right rotated optics

**Finish** (*required*)

DDBXD	Dark bronze
DBLXD	Black
DNAXD	Natural aluminum
DWHXD	White
DDBTXD	Textured dark bronze
DBL BXD	Textured black
DNATXD	Textured natural aluminum
DWHGXD	Textured white

**Accessories** *Ordered and shipped separately.*

## Controls & Shields

DLL127F 1.5 JU	Photocell - SSL twist-lock (120-277V)
DLL347F 1.5 CUL JU	Photocell - SSL twist-lock (347V)
DLL480F 1.5 CUL JU	Photocell - SSL twist-lock (480V)
DSHORT SBK U	Shorting cap
DSX0HS 20C U	House-side shield for 20 LED unit
DSX0HS 30C U	House-side shield for 30 LED unit
DSX0HS 40C U	House-side shield for 40 LED unit
DSX0DDL U	Diffused drop lens (polycarbonate)
PUMBA DDBXD U	Square and round pole universal mounting bracket adaptor (specify finish)
KMA8 DDBXD U	Mast arm mounting bracket adaptor (specify finish)

**Please use the spec sheet at [www.acuitybrands.com](http://www.acuitybrands.com) when ordering to ensure component compatibility for your desired configuration.**



## DSX2

## 400W - 1000W MH Replacement



## DSX1

## 250W - 750W MH Replacement



## DSX0

175W - 400W MH Replacement



Visit [www.lithonia.com](http://www.lithonia.com) for more information







